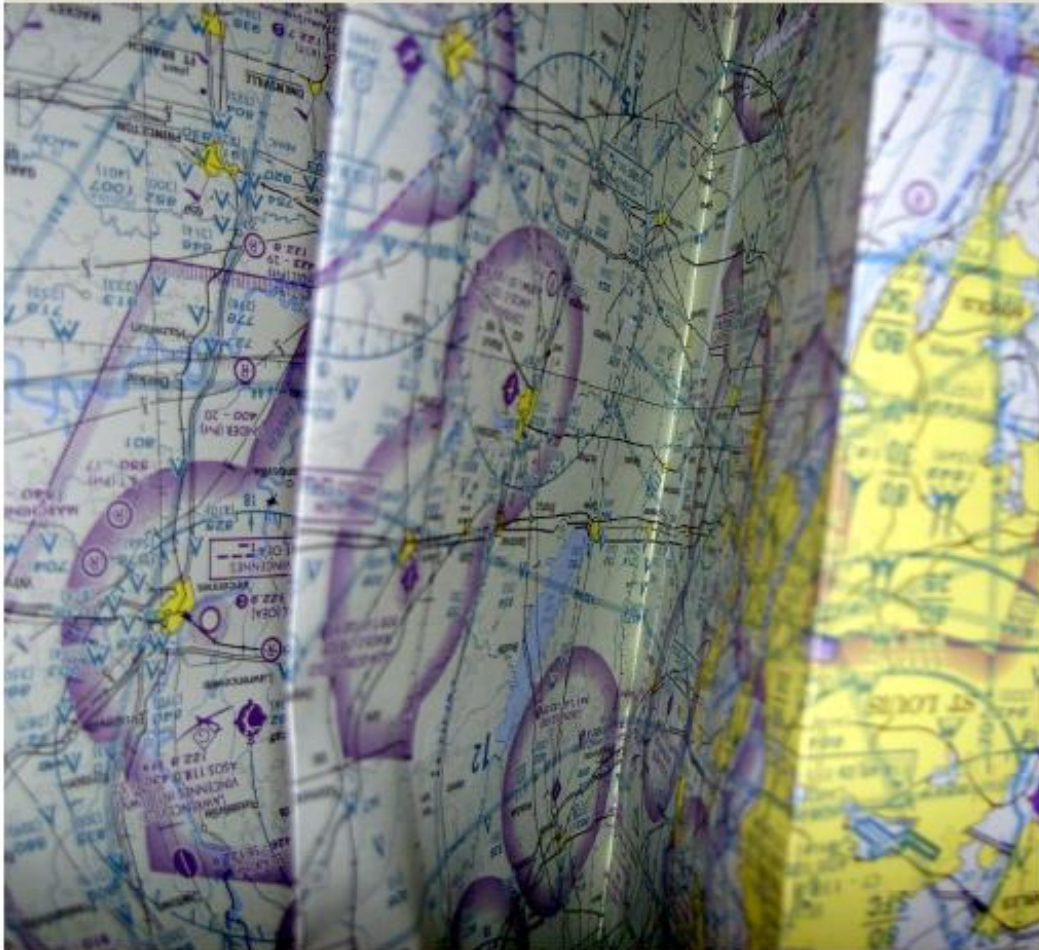


**ANDREW W. MELLON POSTDOCTORAL  
FELLOWSHIP IN THE HUMANITIES  
NINTH ANNUAL CONFERENCE, 2015**



**“WORLDING THE MINOR: POETICS OF  
DISTANT RELATION”**

**MARCH 13-14, 2015**

**UNIVERSITY OF CALIFORNIA, LOS ANGELES**

## FRIDAY, MARCH 13, ROYCE HALL 306

10:00 am *WELCOME*

**David Schaberg**  
UCLA Dean of Humanities

**Françoise Lionnet and Shu-mei Shih**, Co-Directors, Mellon  
Postdoctoral Fellowship in the Humanities, “Cultures in  
Transnational Perspective” Program

10:30 am “AESTHETICS OF THE TRANSNATIONAL”

**Maya Boutaghou**, Assistant Professor in Modern Languages and  
Women Studies (Florida International University)  
“Ornamental Details in French Colonial Aesthetics”

**Jeannine Murray-Román**, Visiting Assistant Professor of French  
(Reed College), Assistant Professor of Modern Languages (Florida  
State University as of July 2015)  
“Transgendered Transnationalism and Sexile’s Aesthetics of the  
In-Between”

**JoAnne Ruvoli**, Assistant Professor of English (Ball State  
University)  
“Transnational Appropriation: Multiple Frames in Nina Paley’s  
*Sita Sings the Blues*”

**Babli Sinha**, Associate Professor of English and Director of Media  
Studies (Kalamazoo College)  
“Biography, Performance, and the Films of Merle Oberon”

**Travis Workman**, Assistant Professor of Asian Languages and  
Literature (University of Minnesota)  
“Melodrama and the Cold War: Ideas and Emotion in Korean  
Cinemas”

Moderator: **Jasmine Trice**, Assistant Professor, Department of  
Film, Television and Digital Media (UCLA)

12:30 pm *LUNCH BREAK*

## FRIDAY CONTINUED

**1:45 pm** "FINDING UTOPIA IN THE NETWORK: SCREENS, SPACE, AND DIGITAL PRACTICE"

**Anne Cong-Huyen**, Co-Coordinator & Digital Scholar, Digital Liberal Arts Center (Whittier College)

"The Aspirational Socialist Oriented Market City in Southeast Asia"

**Sonali Pahwa**, Assistant Professor of Theatre Arts and Dance (University of Minnesota)

"Digital Bodies and Spatial Performance In Egypt: Mapping Revolutionary Repertoires in Women's Online Practice"

**Chase Smith**, Lecturer, The Writing Program (University of Southern California)

"The 'Hawaii episode' and Soundstages of Modernity"

Moderator: **Mishuana Goeman**, Vice Chair and Associate Professor, Department of Gender Studies (UCLA)

**3:15 pm** *COFFEE BREAK*

**3:30 pm** "IDENTITY, CULTURE AND TRANSDISCIPLINARY EXPRESSIVE FORMS"

**Alessandra Di Maio**, Associate Professor of English and Comparative Literature (University of Palermo, Italy), Visiting Associate Professor of Italian (Smith College)

"From Africa with Love: Carlo's Ethiopian Photo Journal"

**Sarah Valentine**, Visiting Assistant Professor, Department of English (Northwestern University)

"Writing Race and Trauma: 'The Divine Auditor'"

**Namrata Poddar**, MFA candidate in Fiction (Bennington Writing Seminars, Vermont)

"Silk Stole"

Moderator: TBA

## SATURDAY, MARCH 14, ROYCE HALL 306

10:00 am "UNSETTLED MAPS, SYMBOLIC GEOGRAPHIES, TANGLED TRANSITS"

### A ROUNDTABLE DISCUSSION

This roundtable explores ways of studying 'the global' beyond neoliberal convention. In our attempt to unsettle the supposed imperative of expanding uniformity and equivalence, we discuss together how globalization is better grasped as the ongoing production of different geographies, temporalities, ontologies, and politics. In an open-ended conversation among literary critics, political scientists, and historians, we explore the contours of memory, myth, and imagination and probe the limits of space, time, and social power which characterize our world of intimate distant relations.

**Claudia Hoffmann**, Visiting Assistant Professor of English  
(University of Toronto)

**Bruno Jean-François**, Assistant Professor of French &  
Francophone Studies (Pennsylvania State University)

**Kris Manjapra**, Associate Professor of History (Tufts University)

**Ani Mukherji**, Visiting Assistant Professor of American Studies  
(University of Wisconsin, Milwaukee)

**Melissa Tandiwe Myambo**, Mellon Postdoctoral Fellow, Visiting  
Assistant Professor, International Institute (UCLA)

**Anita Plummer**, Visiting Assistant Professor, International Studies  
(Spelman College)

12:00 pm *LUNCH BREAK*

1:30 pm "RETHINKING COMPARISON AND OTHER WORLD LITERATURES"

**Annette Damayanti Lienau**, Assistant Professor of Comparative  
Literature (University of Massachusetts Amherst)

"Provincializing the Hejaz: Scriptural Arabic, Vernacular Relations,  
and Trans-Regional Comparisons across the Global South"

## SATURDAY CONTINUED

**Firat Oruc**, Assistant Professor of World Literature (Georgetown University-Qatar)

“Comparison’s Other End: Istanbul 1933-1946 Again”

Moderator: **Nouri Gana**, Associate Professor of Comparative Literature and Near Eastern Languages & Cultures (UCLA)

3:00 pm *COFFEE BREAK*

3:15 pm “MINORITY REPRESENTATION AND THE POSTCOLONIAL NATION”

**Tzu-hui Celina Hung**, Assistant Professor of Literature (NYU Shanghai)

“‘We Are Family’: An Accented Immigrant Discourse in Taiwan”

**Jerome Camal**, Assistant Professor of Anthropology (University of Wisconsin-Madison)

“Creolizing Sovereignty: Musical Paths to a Creole Postnationalism”

**Alvin K. Wong**, Assistant Professor of Chinese Literature and Film (Underwood International College of Yonsei University),

“Politicizing Hong Kong Postcoloniality in Times of Urban Protest”

Moderator: **Sean Metzger**, Associate Professor, School of Theater, Film and Television (UCLA)

4:45 pm *WRAP UP*

**Françoise Lionnet and Shu-mei Shih**, Co-Directors, Mellon Postdoctoral Fellowship in the Humanities, “Cultures in Transnational Perspective” Program

5:30 pm *CLOSING RECEPTION, ROYCE HALL 314*

## **“WORLDING THE MINOR: POETICS OF DISTANT RELATION”**

Celebrating the completion of the "Cultures in Transnational Perspectives" Mellon Postdoctoral Program in the Humanities at UCLA (2005-2015), this conference brings together many of the alumni fellows to showcase their current work, scholarly as well as creative, on questions and themes related to the intellectual objectives of the program. Addressing minor articulations across discrepant geographies and temporalities that are nevertheless always in conjunction, "Worlding the Minor" enacts a poetics of distant relation through new conversations, in the minor key, about transnationalism, migration, race, vernacularity, aesthetics, and disciplinarity. Adequately worlded, a poetics of distant relation may not only disrupt usual circuits and unsettle maps, but may also promise new intimacies and solidarities, i.e., a new politics.

### **ORGANIZED BY**

#### **Program Co-directors:**

Françoise Lionnet and Shu-mei Shih

#### **Mellon Fellow:**

Melissa Tandiwe Myambo

#### **Staff:**

Allison Kershner and Alexandra Gomez

This event is sponsored by the Dean of Humanities, College of Letters and Sciences and the Mellon Postdoctoral Fellowship in the Humanities at UCLA.

This program is free and open to the public; however, seating is limited. Pay-by-space parking will be available on the top level of Parking Structure 5. If all spots are full, please go to the kiosk on Sunset and Westwood Plaza to purchase a parking pass for the structure (\$20/day).

For further information, please contact Allison Kershner at [akershner@humnet.ucla.edu](mailto:akershner@humnet.ucla.edu)